

Robbinsville High School
Mathematics Department
155 Robbinsville-Edinburg Road
Robbinsville NJ 08691

Dear Students,

Welcome to Calculus! Attached you will find a summer packet for math reinforcement for the upcoming 2018-2019 school year. This packet should be completed and returned to school on the ***first full day of school***. September is filled with review, but with completion of this packet, the review will come very naturally. The packet will be ***collected*** and ***graded as a 20-point homework grade*** based on ***completion*** and ***effort***.

To assist in your review and completion of this packet there are videos corresponding to each section of this packet. The videos are linked into this packet using QR codes that look like this:



In order to view the videos, simply download a QR scanner to your phone, use the scanner to scan the code, and that will directly link you to each video. To see the full collection of videos on your computer, go to:
www.vimeo.com/MangieriMath

If you find yourself still confused on certain topics, it is suggested that you search for the topic on one of the following websites:

- ShowMe <http://www.showme.com>
- Khan Academy: <http://www.khanacademy.org/Math>
- Math TV: <http://www.mathtv.com>

We look forward to teaching you and getting to know you next year.

Have a great summer!

Robbinsville High School Mathematics Department

Directions: Using the appropriate inverse operations, solve each equation. Be sure to check for extraneous solutions if applicable.



1. $\sqrt{4a + 17} = a - 1$

2. $\sqrt{3x - 3} + 2 = \sqrt{2x + 2}$

3. $\sqrt{2m + 21} = m + 3$

4. $-5 = -r + \sqrt{4r - 24}$

5. $-x + \sqrt{39 - 5x} = -9$

6. $\sqrt{5n - 4} - 4 = \sqrt{4 - n}$

7. $\frac{41}{5} = 8 + (14 - v)^{-\frac{1}{2}}$

8. $-46 = -1 - 5(x + 1)^{\frac{2}{3}}$

9. $8 + 2(2x - 4)^{\frac{2}{3}} = 440$

10. $864 = 4(2a + 6)^{\frac{3}{2}}$

11. $\frac{7x+3}{x^2-8x+15} + \frac{3x}{x-5} = \frac{1}{3-x}$

12. $\frac{4(x-4)}{x^2-+2x-8} = \frac{4}{x+4}$

13. $\frac{1}{2x} + \frac{3}{x+7} = \frac{-1}{x}$

14. $\frac{9}{3x} = \frac{4}{x+2}$

15. $\frac{1}{3}(10^{2x}) = 12$

16. $25e^{2x+1} = 962$

17. $3(12^{x-1}) - 7 = 2$

18. $1000e^{-4x} = 75$

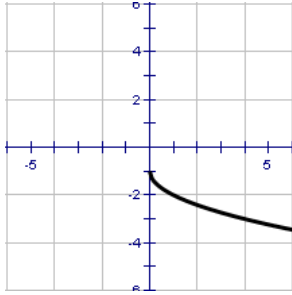
19. $\log_2\left(\frac{x+5}{x-2}\right) = 3$

20. $6 \ln(x + 1) = 2$

Directions: Identify the Parent Function, the intervals where the function is Increasing and Decreasing and the Domain and Range of the given function.

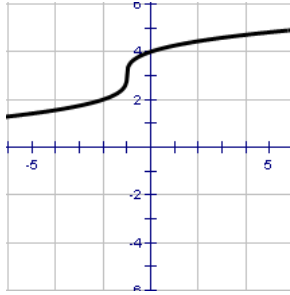


21.



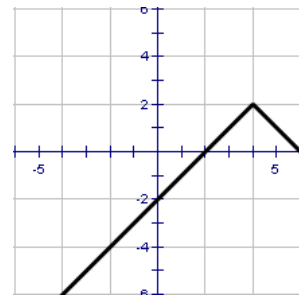
Name: _____
 Increasing: _____
 Decreasing: _____
 Domain: _____
 Range: _____

22.



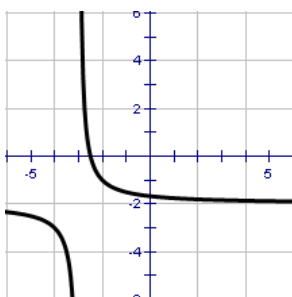
Name: _____
 Increasing: _____
 Decreasing: _____
 Domain: _____
 Range: _____

23.



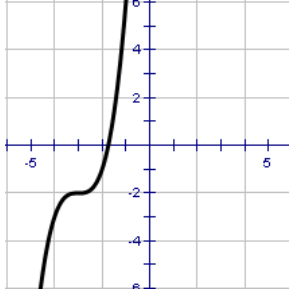
Name: _____
 Increasing: _____
 Decreasing: _____
 Domain: _____
 Range: _____

24.



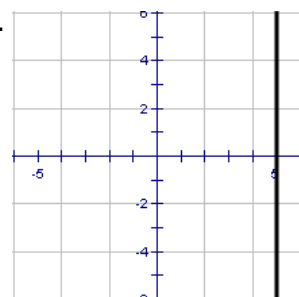
Name: _____
 Increasing: _____
 Decreasing: _____
 Domain: _____
 Range: _____

25.



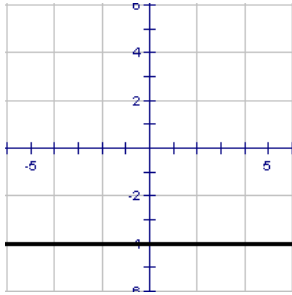
Name: _____
 Increasing: _____
 Decreasing: _____
 Domain: _____
 Range: _____

26.



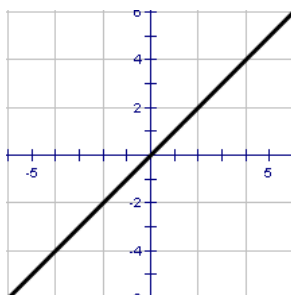
Name: _____
 Increasing: _____
 Decreasing: _____
 Domain: _____
 Range: _____

27.



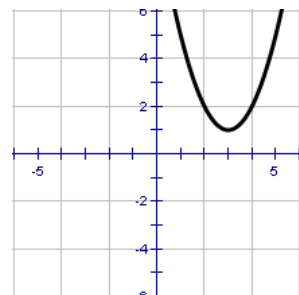
Name: _____
 Increasing: _____
 Decreasing: _____
 Domain: _____
 Range: _____

28.



Name: _____
 Increasing: _____
 Decreasing: _____
 Domain: _____
 Range: _____

29.



Name: _____
 Increasing: _____
 Decreasing: _____
 Domain: _____
 Range: _____

Directions: Evaluate the function at each specified value of the independent variable and simplify.



30. $g(t) = 4t^2 - 3t + 5$

$g(2) =$

$g(t-2) =$

$g(t) - 4g(2) =$

31. $f(x) = \begin{cases} 3x - 1, & x \leq -1 \\ 4x, & -1 < x < 1 \\ x^2 + 1, & x \geq 1 \end{cases}$

$f(-2) =$

$f(-1/2) =$

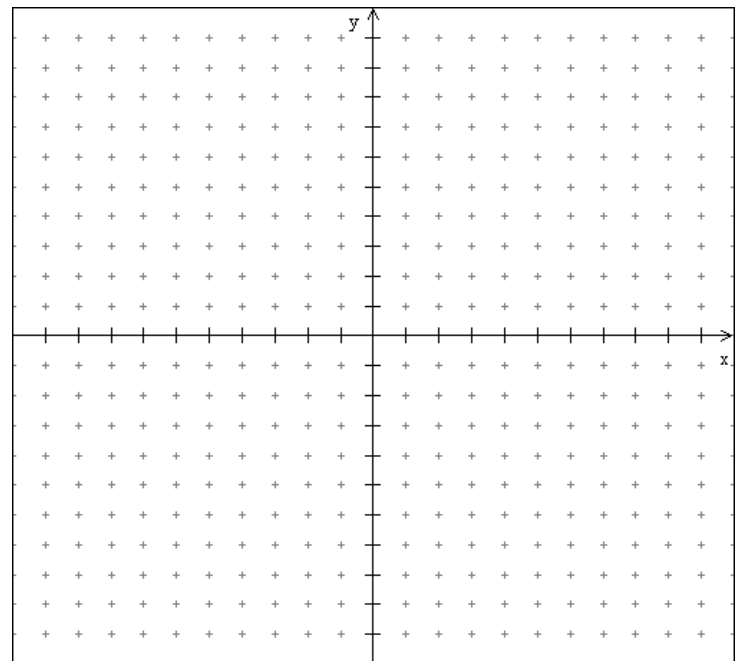
$f(3) =$

Directions: Graph the following piecewise functions and define the requested properties.

32. Piecewise equations:

Restrictions:

$$F(x) = \begin{cases} 3x - 2 & x \leq 2 \\ x^2 + 1 & -2 < x < 1 \\ 6 & x \geq 1 \end{cases}$$



Domain: _____

Range: _____

Increasing: _____

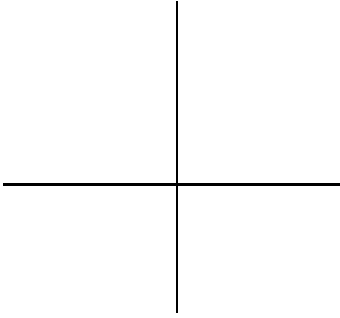
Decreasing: _____

Constant: _____

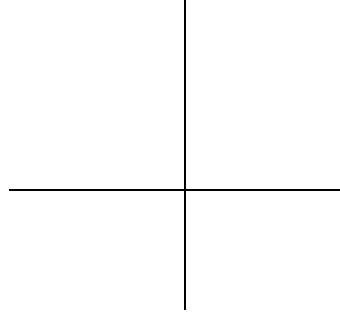
Directions: Sketch the graphs of the following without your calculator.



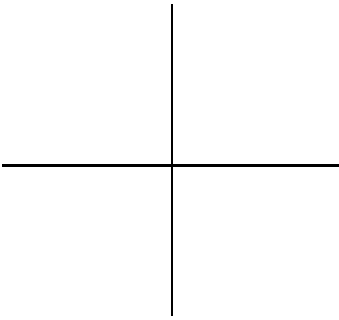
37. $y = -\sqrt{x+2}$



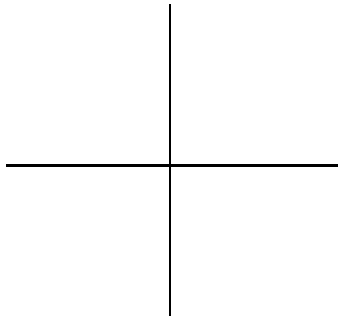
38. $y = x^2 - 4$



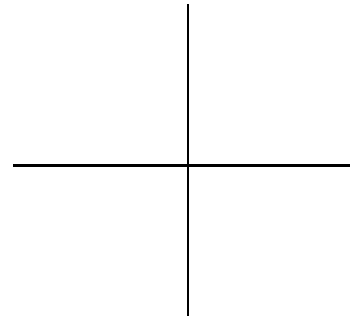
39. $y = \sqrt{x-3} + 2$



40. $y = |x+1| - 2$

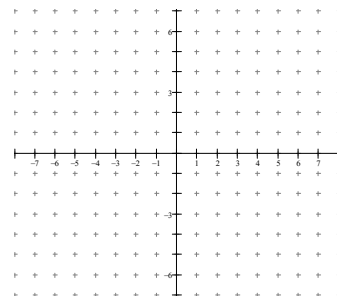


41. $y = \sqrt[3]{x-2}$

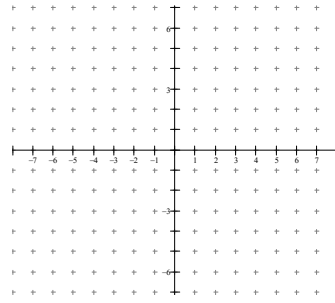


Directions: Determine the parent function, describe its transformations, and sketch:

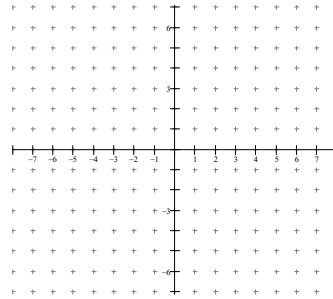
42. $f(x) = -(x+10)^2 + 5$



43. $f(x) = \frac{1}{2}\sqrt{3-x} + 2$



44. $f(x) = 6 - |x + 5|$



Directions: Find the distance between the points.



45. $(-3, 8), (1, 5)$

46. $(-2, 6), (4, -3)$

47. $(5.6, 0), (0, 8.2)$

Directions: Find the line that passes through the given point with the given slope. Then find its perpendicular line through that same point.



48. Point: $(3, 0)$ Slope: $m = \frac{2}{3}$

49. Point: $(10, -3)$ Slope: $m = -\frac{1}{2}$

50. Point: $(-3, 1)$ Slope: $m = 0$

Directions: Identify any x and y intercepts of each function.



51. $f(x) = x^2$

52. $f(x) = 4x^2 - 2$

53. $f(x) = |x| + 4$

54. $f(x) = x^3$

x-int _____

x-int _____

x-int _____

x-int _____

y-int _____

y-int _____

y-int _____

y-int _____

55. $f(x) = 2x^3 + 1$

56. $f(x) = \frac{1}{x}$

57. $f(x) = \frac{1}{x^2} + 3$

58. $f(x) = \ln(x)$

x-int _____

x-int _____

x-int _____

x-int _____

y-int _____

y-int _____

y-int _____

y-int _____

59. $f(x) = e^x$

60. $f(x) = \sin x$

61. $f(x) = 2\cos x + 1$

62. $f(x) = \tan x$

x-int _____

x-int _____

x-int _____

x-int _____

y-int _____

y-int _____

y-int _____

y-int _____

Directions: Find the inverse function of f analytically.



63. $f(x) = \frac{4x+7}{2}$

64. $g(x) = \sqrt{x+7} - 5$

65. $h(x) = \frac{1}{8}(x+2)^2 - 1$